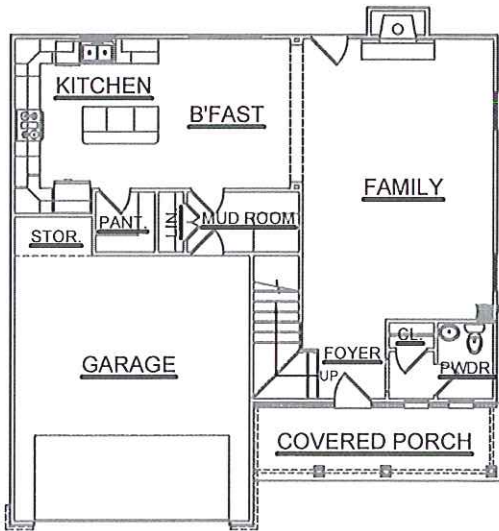
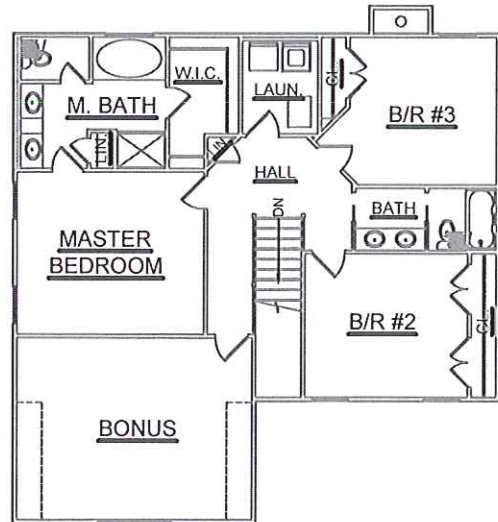


# THE BRISTOL



FIRST FLOOR PLAN



SECOND FLOOR PLAN



## SQUARE FOOTAGE

FIRST FLOOR	946 SQ. FT.
SECOND FLOOR	1400 SQ. FT.
GARAGE	456 SQ. FT.
TOTAL HEATED	2346 SQ. FT.



214 NORTH ENTERS ROAD • KNOXVILLE, TENNESSEE 37912 • PHONE: (865) 228-4181