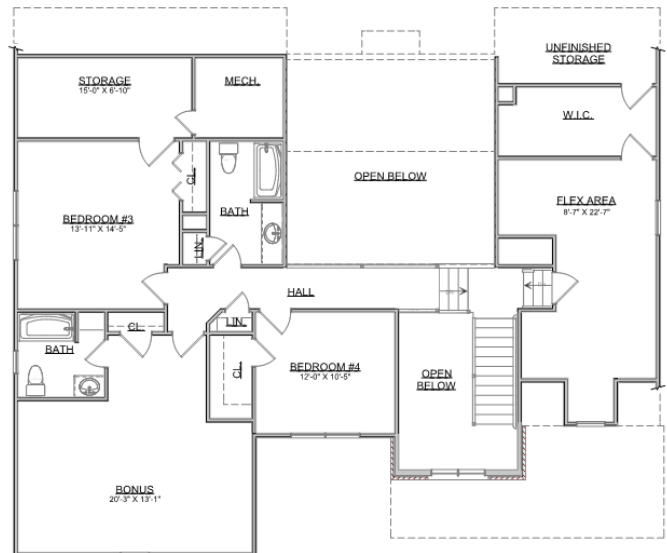
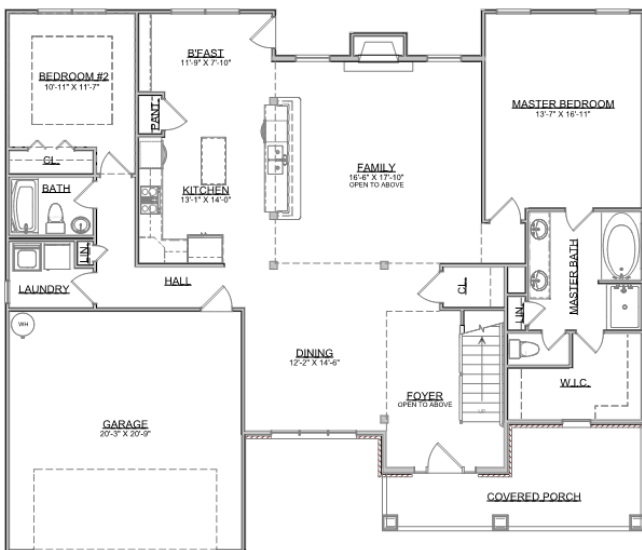


The Augusta



Craftsman Series | 2 Car Front Entry Garage | 4 Bedroom | 4 Bathrooms



| | |
|---------------------------|------------|
| Main Floor: | 1,804 sqft |
| Second Floor: | 1,512 sqft |
| Garage: | 439 sqft |
| Total Living Area: | 3,316 sqft |

SMITHBILT HOMES RESERVES THE RIGHT TO MAKE MODIFICATIONS TO FLOORPLANS, MATERIALS, AND SPECIFICATIONS WITHOUT NOTICE. ILLUSTRATIONS ARE ARTIST RENDERINGS AND DO NOT REFLECT STANDARD FINISHES. ORAL REPRESENTATIONS CANNOT BE RELIED UPON. DESIGNED BY SOUTHLAND DESIGNS. ALL RIGHTS RESERVED.