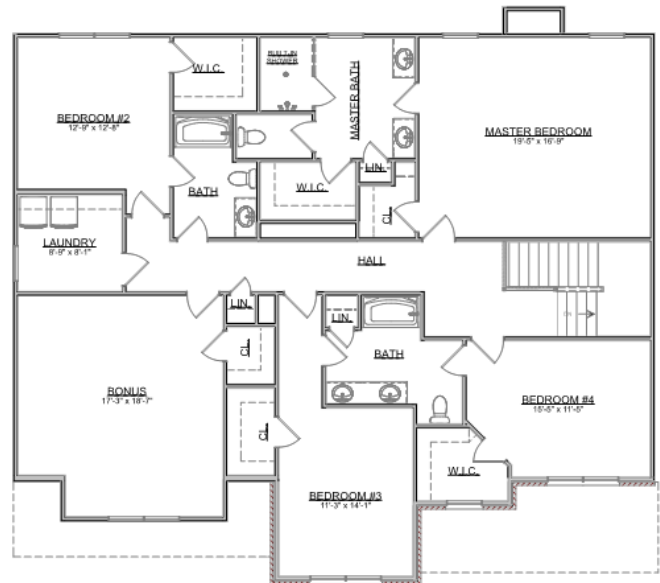
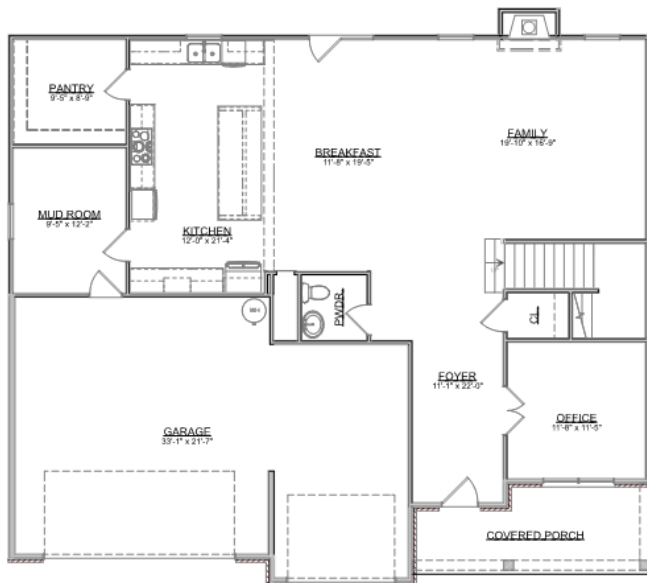


The Baymont



Craftsman Series | 3 Car Front Entry Garage | 4 Bedroom | 3.5 Bathrooms



First Floor:	1,570 sqft
Second Floor:	2,114 sqft
Garage:	719 sqft
Total Living Area:	3,684 sqft

SMITHBILT HOMES RESERVES THE RIGHT TO MAKE MODIFICATIONS TO FLOORPLANS, MATERIALS, AND SPECIFICATIONS WITHOUT NOTICE. ILLUSTRATIONS ARE ARTIST RENDERINGS AND DO NOT REFLECT STANDARD FINISHES. ORAL REPRESENTATIONS CANNOT BE RELIED UPON. DESIGNED BY SOUTHLAND DESIGNS. ALL RIGHTS RESERVED.