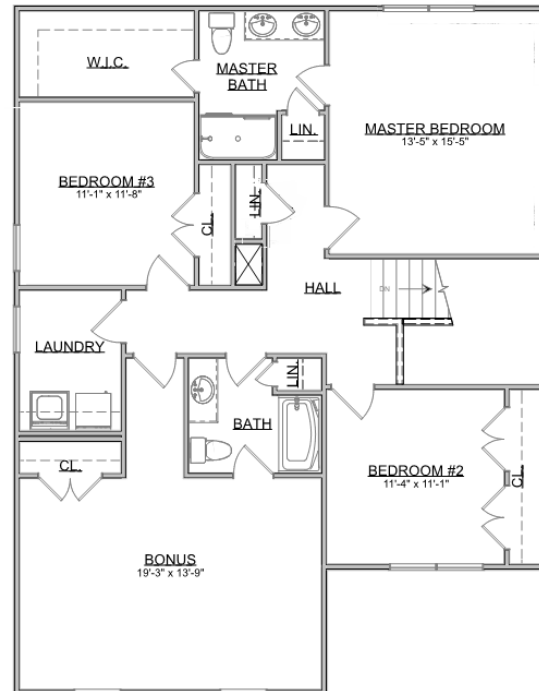
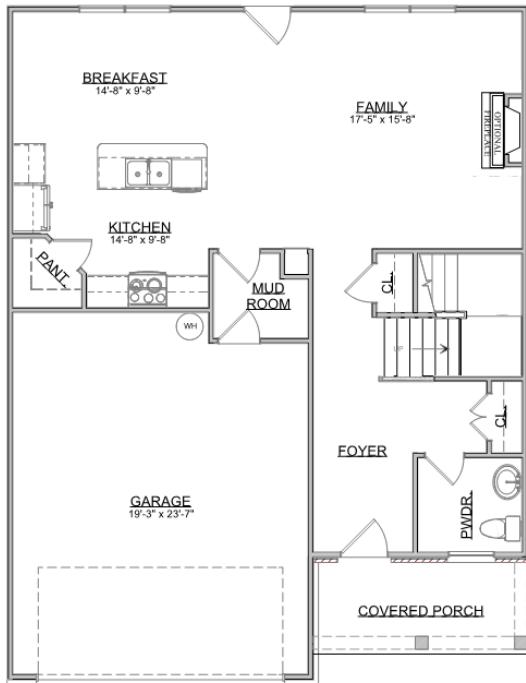


The Abigail



Inspire Series | 2 Car Front Entry Garage | 3 Bedroom | 2.5 Bathrooms



Main Floor:	922 sqft
Second Floor:	1,302 sqft
Garage:	463 sqft
Total Living Area:	2,224 sqft

SMITHBILT HOMES RESERVES THE RIGHT TO MAKE MODIFICATIONS TO FLOORPLANS, MATERIALS, AND SPECIFICATIONS WITHOUT NOTICE. ILLUSTRATIONS ARE ARTIST RENDERINGS AND DO NOT REFLECT STANDARD FINISHES. ORAL REPRESENTATIONS CANNOT BE RELIED UPON. DESIGNED BY SOUTHLAND DESIGNS. ALL RIGHTS RESERVED.