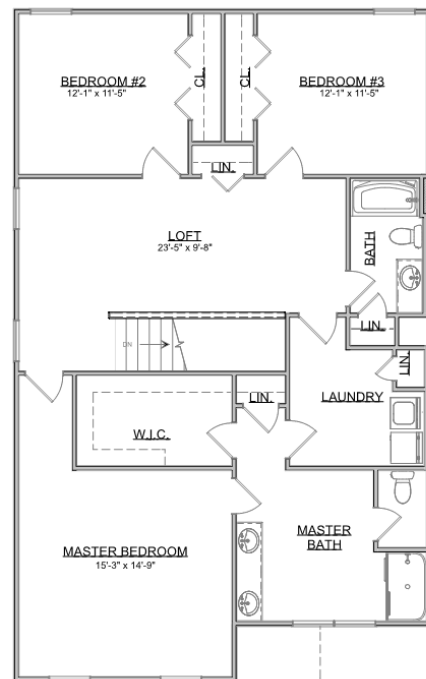
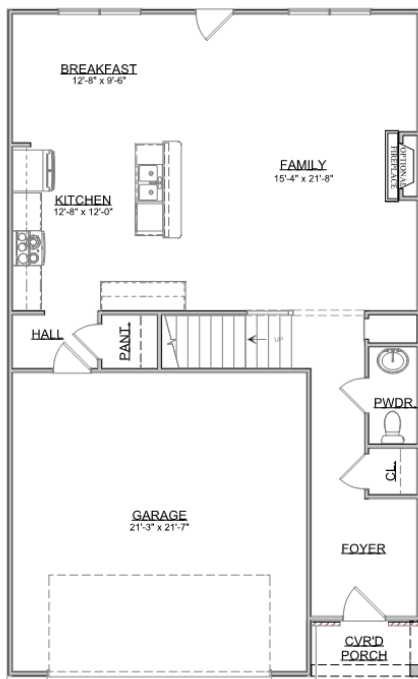


The Henley



Craftsman Series | *2 Car Front Entry Garage* | *3 Bedroom* | *2.5 Bathrooms*



First Floor:	940 sqft
Second Floor:	1,346 sqft
Garage:	478 sqft
Total Living Area:	2,286 sqft

SMITHBILT HOMES RESERVES THE RIGHT TO MAKE MODIFICATIONS TO FLOORPLANS, MATERIALS, AND SPECIFICATIONS WITHOUT NOTICE. ILLUSTRATIONS ARE ARTIST RENDERINGS AND DO NOT REFLECT STANDARD FINISHES. ORAL REPRESENTATIONS CANNOT BE RELIED UPON. DESIGNED BY SOUTHLAND DESIGNS. ALL RIGHTS RESERVED.