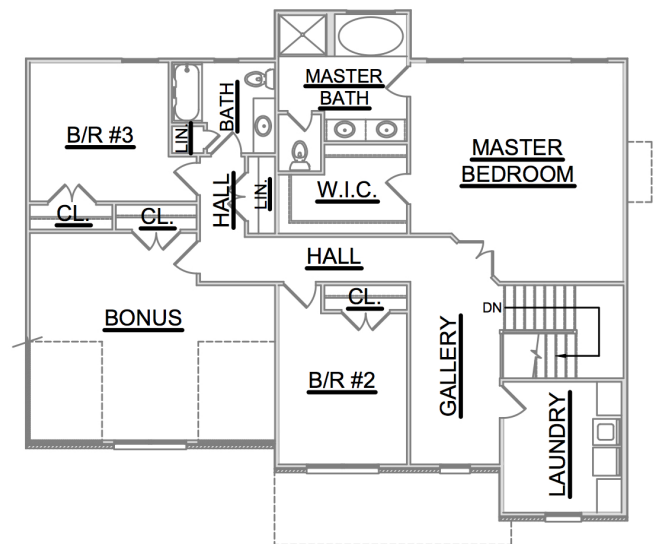
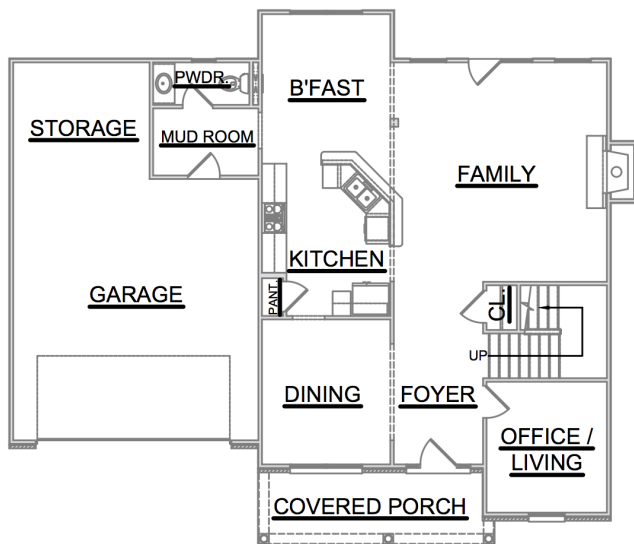


The Manning



Craftsman Series | 2 Car Side Entry Garage | 3 Bedroom | 2.5 Bathrooms



First Floor:	1,174 sqft
Second Floor:	1,710 sqft
Garage:	615 sqft
Total Living Area:	2,884 sqft

SMITHBILT HOMES RESERVES THE RIGHT TO MAKE MODIFICATIONS TO FLOORPLANS, MATERIALS, AND SPECIFICATIONS WITHOUT NOTICE. ILLUSTRATIONS ARE ARTIST RENDERINGS AND DO NOT REFLECT STANDARD FINISHES. ORAL REPRESENTATIONS CANNOT BE RELIED UPON. DESIGNED BY SOUTHLAND DESIGNS. ALL RIGHTS RESERVED.