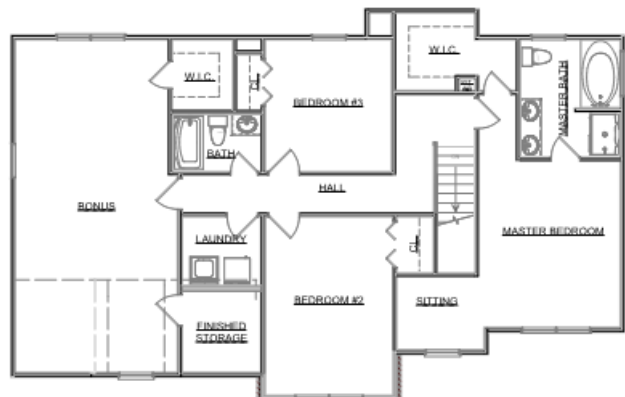


The Greendale



Craftsman Series | 2 Car Front Entry Garage | 3 Bedroom | 2.5 Bathrooms



Main Floor:	942 sqft
Second Floor:	1,566 sqft
Garage:	661 sqft
Total Living Area:	2,508 sqft

SMITHBILT HOMES RESERVES THE RIGHT TO MAKE MODIFICATIONS TO FLOORPLANS, MATERIALS, AND SPECIFICATIONS WITHOUT NOTICE. ILLUSTRATIONS ARE ARTIST RENDERINGS AND DO NOT REFLECT STANDARD FINISHES. ORAL REPRESENTATIONS CANNOT BE RELIED UPON. DESIGNED BY SOUTHLAND DESIGNS. ALL RIGHTS RESERVED.