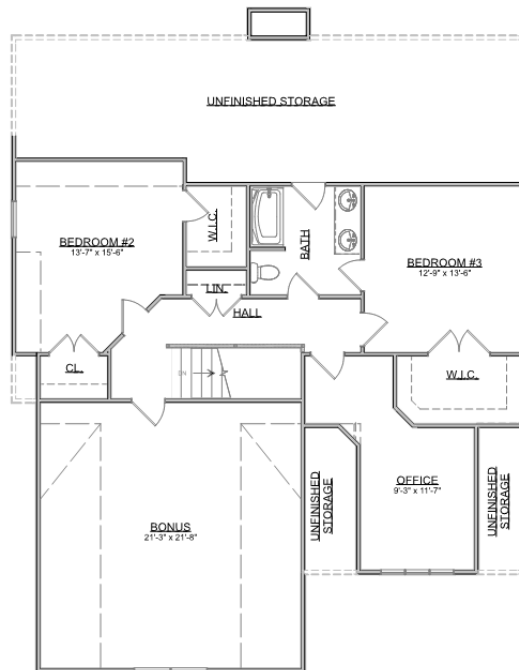
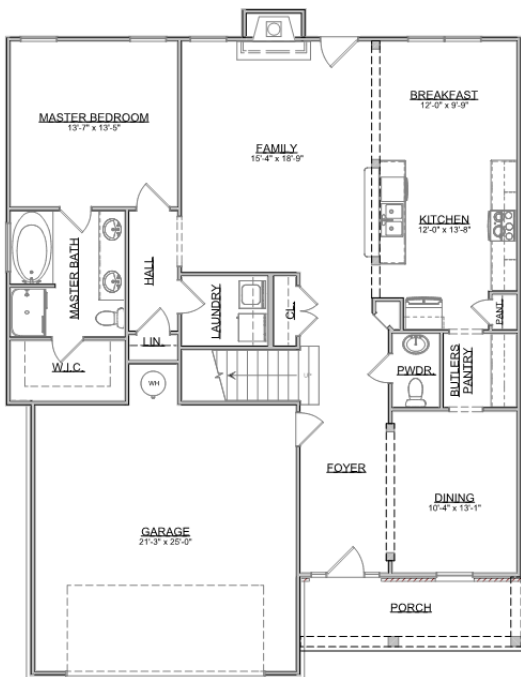


# The Thorton



Craftsman Series | 2 Car Front Entry Garage | 3 Bedroom | 2.5 Bathrooms



<b>First Floor:</b>	1,502 sqft
<b>Second Floor:</b>	1,373 sqft
<b>Garage:</b>	494 sqft
<b>Total Living Area:</b>	2,875 sqft

SMITHBILT HOMES RESERVES THE RIGHT TO MAKE MODIFICATIONS TO FLOORPLANS, MATERIALS, AND SPECIFICATIONS WITHOUT NOTICE. ILLUSTRATIONS ARE ARTIST RENDERINGS AND DO NOT REFLECT STANDARD FINISHES. ORAL REPRESENTATIONS CANNOT BE RELIED UPON. DESIGNED BY SOUTHLAND DESIGNS. ALL RIGHTS RESERVED.