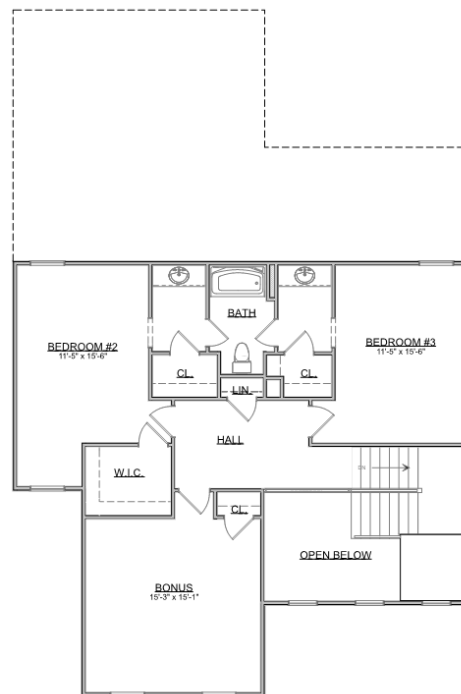
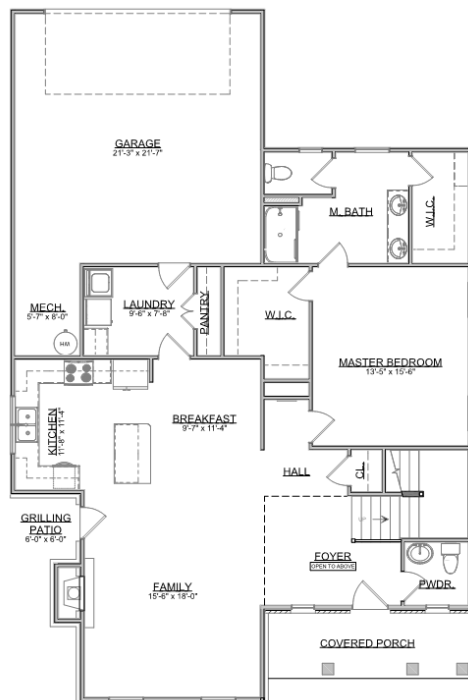


The Lynnox



Carriage Series | 2 Car Rear Entry Garage | 3 Bedroom | 2.5 Bathrooms



Main Floor:	1,398 sqft
Second Floor:	1,045 sqft
Garage:	526 sqft
Total Living Area:	2,443 sqft

SMITHBILT HOMES RESERVES THE RIGHT TO MAKE MODIFICATIONS TO FLOORPLANS, MATERIALS, AND SPECIFICATIONS WITHOUT NOTICE. ILLUSTRATIONS ARE ARTIST RENDERINGS AND DO NOT REFLECT STANDARD FINISHES. ORAL REPRESENTATIONS CANNOT BE RELIED UPON. DESIGNED BY SOUTHLAND DESIGNS. ALL RIGHTS RESERVED.