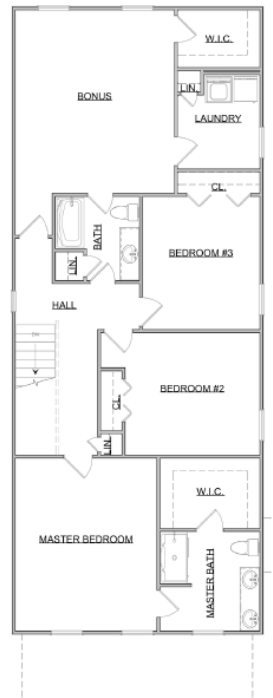


The Houghton



Carriage Series | 02 Car Rear Entry Garage | 3 Bedroom | 2.5 Bathrooms



Main Floor:	888 sqft
Second Floor:	1,388 sqft
Garage:	563 sqft
Total Living Area:	2,276 sqft

SMITHBILT HOMES RESERVES THE RIGHT TO MAKE MODIFICATIONS TO FLOORPLANS, MATERIALS, AND SPECIFICATIONS WITHOUT NOTICE. ILLUSTRATIONS ARE ARTIST RENDERINGS AND DO NOT REFLECT STANDARD FINISHES. ORAL REPRESENTATIONS CANNOT BE RELIED UPON. DESIGNED BY SOUTHLAND DESIGNS. ALL RIGHTS RESERVED.