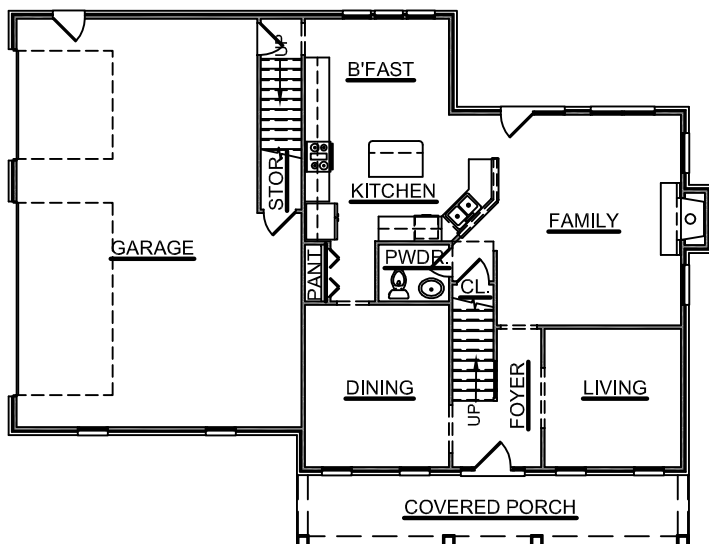
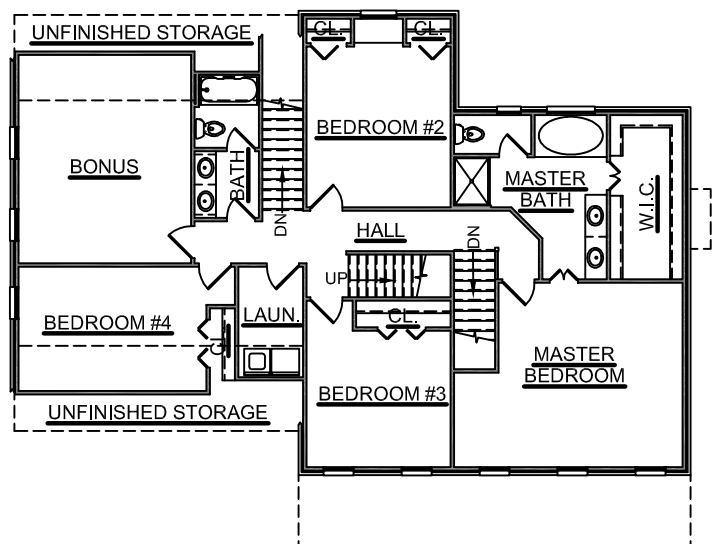


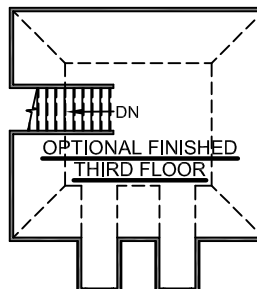
THE HIGHGROVE



FIRST FLOOR



SECOND FLOOR



OPT. FINISHED THIRD FLOOR



SQUARE FOOTAGE

FIRST FLOOR	1073 SQ. FT.
SECOND FLOOR	1651 SQ. FT.
GARAGE	820 SQ. FT.
OPT. FINISHED THIRD FLOOR	418 SQ. FT.
TOTAL LIVING	2724 SQ. FT.
w/ OPT. FINISHED THIRD FLOOR	3142 SQ. FT.